


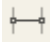
Auto Distance Measurement Guide

Below are the instructions to setup the edge detection feature in DinoCapture 2.0. There are three main sections to setup the software for edge detection, and set values for pass/fail analysis. The first step is to create two Detecting Lines for a path for the Measurement Line to follow. Then setup the Measurement Line to visualize the distance between two points. Lastly you can set the Validation Rules to setup the parameter to automatically detect pass/fail parameter values.

Setting the Detection Line*:

1. Select the **Line Draw**  tool.
2. Hold down the **Ctrl** key when drawing the detection line.
3. Set the Detection Criteria for edge detection (See Fig. 1). A little square should move on the detection line indicating location of edge detection.
4. Create the second detection line by repeating steps 1-3.


Setting the Measurement Line:

1. Input magnification.
2. Select **Line Measurement**  tool.
3. Click on each detection line to set the endpoints for the measurement line. It will automatically snap to the little squares that indicates the edge detection.

Optional - Setting the Validation Rules:

1. Left click on the measurement line to select it for editing**.
2. Right click measurement value in the dashed line box.
3. Select **Validation Rule** (See Fig. 5) to set the parameters for pass/fail warnings.
4. Input minimum and maximum values for each data range (See Fig. 2) and select a picture (See Fig. 3) indicating that the values are within the given range.

*The detection criteria can be changed after setting them (See Fig. 1) or have the size/ position and length of the detection line locked at any time (See Fig. 5).

1. Move your mouse over the detection line and the cursor will become a pointing finger  , **OR** Click on a detection line and the end points will show squares at the end points indicating that it is selected (If it can't be selected, make sure no draw or measurement tools are selected and try again).
2. Right click on any part
3. Change the settings


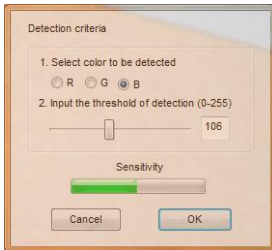
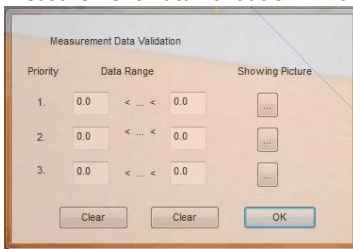
** The measurement line is available for editing if changes need to be made after the first setup. When the mouse pointer becomes a pointing finger  it can be selected. When selected a dashed lined box wraps around the text box that contains the measurement length value. (If it can't be selected, make sure **NO** draw or measurement tools are selected and try again).

Fig. 1
Detection Criteria window



Note: The Sensitivity bar indicates the sensitivity of detection threshold when detecting the edge. RGB regard the pixels.

Fig. 2
Measurement Data Validation window to set threshold values



Note: Three data ranges can be created while "1." is first priority.

Fig. 3
Show Picture window is selected from the Measurement Data Validation window (Fig. 2).

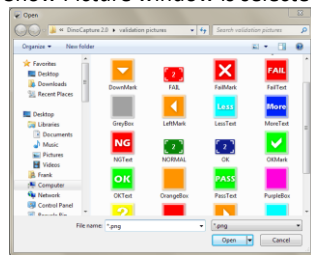


Fig. 4
Right click menu on Detection Line

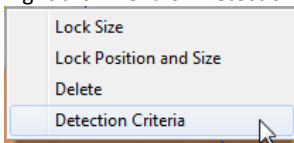


Fig. 5
Right click menu on Line Measurement

